

# SkyFusion Pak

## Comprehensive aerial intelligence solution



*SkyFusion Pak is the most cost-effective and advanced turnkey solution for real-time aerial intelligence for a broad range of applications.*

Combining ease of use with sophisticated features usually reserved for more expensive solutions, SkyFusion Pak is a breakthrough in value, usability, portability and functionality for aerial digital imaging.

- Initial installation in less than two hours; subsequent installs take less than 15 minutes
- Intuitive, common sense user interface
- Real-time image and video streaming via 3G, 4G, microwave or satellite
- Automated analytics/reporting providing telemetry and geo-spatial data with 3D map overlays

### Applications

A comprehensive, turnkey system, SkyFusion Pak is designed for mission-critical and technically-demanding airborne digital surveillance applications including:

- Airborne law enforcement
- Border patrol
- Search and rescue
- Traffic monitoring
- Police-Fire-Rescue
- Aerial fire fighting
- Homeland Security and Special Operations
- Tactical communications and navigation
- Crisis response, mitigation and mobilization
- Facility and property management

### Field-proven and convenient

Small, lightweight and portable, the SkyFusion Pak can be deployed quickly and installed easily in the field on light aircraft and helicopters. The system can be configured to meet your unique needs with optional components and technologies, such as still and video cameras, enabling both visible and infrared imaging.

### Sourcing SkyFusion Pak

SkyFusion Pak is available from SkyIMD and from authorized systems integrators. To request a quote, contact us at [info@SkyIMD.com](mailto:info@SkyIMD.com) or visit [www.SkyIMD.com](http://www.SkyIMD.com).

### The innovator in aerial imaging

SkyIMD is a provider of innovative solutions for aerial intelligence. We are committed to providing advanced solutions that are affordable and easy to deploy and operate.

# SkyFusion Pak

## Military-class technology for airborne imaging and intelligence

SkyFusion Pak is the most cost-effective and advanced turnkey solution for aerial intelligence in a broad range of applications. Combining ease of use with sophisticated features, SkyFusion Pak is a breakthrough in value and functionality.

### Share images

View images as standard JPEG pictures or overlaid on Google Earth.

- Transfer images via 3G, 4G, microwaver or satellite data connection during flight.
- Send real-time images and telemetry data to multiple recipients on the ground.
- Ground personnel can analyze events in real time.

### Aircraft location

Data includes date and time stamp, distance between camera and target object, aircraft GPS coordinates and altitude.

### Track moving objects

One-click object tracking allows tracking of moving objects\*

- Touchscreen makes tracking moving objects a breeze.

### Image location data

Includes ground elevation, satellite signal precision, horizontal and vertical field of view.

### Directions

Easily obtain directions to and from object location.



\*Requires Advanced Imaging System.

## Intuitive user interface

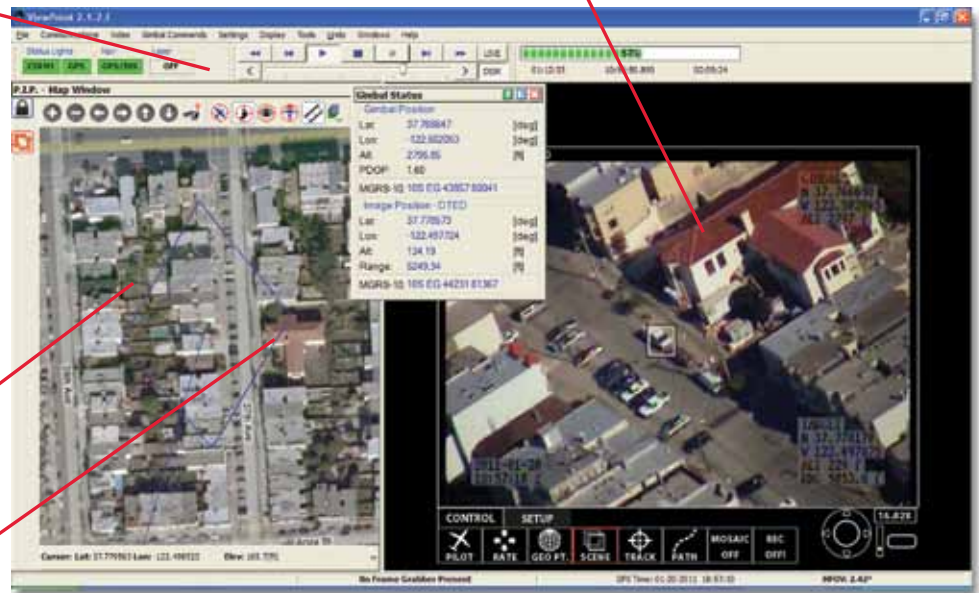
Makes it easy to change view, map orientation or map layer with a click of the button.

## Live video from camera

## Switchable map layers

3D moving map depicts real-time camera position and field of view with terrain elevation.

## Footprint indicator



## Gimbal Status Screen

Display status information at the click of a mouse including GPS coordinates, range and elevation of target and altitude.



## Automated path tracking

Camera follows a pre-programmed path of user created waypoints. Track borders, rivers, pipelines. Establish grid patterns for surveillance.



### Military-class technology for aerial imaging & intelligence



#### Pre-flight operations

- Plan multiple missions in advance
- Pre-define target object path using multiple GPS coordinates
- Pre-define Sensor Point of Interest (SPOI) using separate GPS coordinates

#### In-flight operations

- Intuitive joystick controls and tablet-enabled features
- Real-time video display of area being surveyed
- 3D moving map enables real-time camera position and field of view
- Switchable map layers include satellite, topographic, 2D and 3D views
- One-click object tracking allows tracking of moving objects\*
- One-click scene tracking allows locking camera on a scene\*
- Manual or Automatic control of camera
- Switch target paths or point of interest objects quickly
- Display status information at the click of a mouse, including GPS coordinates, range and elevation of target and altitude
- Switch seamlessly between multiple cameras
- Record images with complete telemetry data, time and date stamp for real-time distribution and analysis
  - Transfer images via 3G, 4G, microwave or satellite data connection
  - View images as standard JPEG pictures or overlaid on Google Earth
  - Automatically send files to multiple email addresses

#### Post-flight operations

- Compare or review image data with previously captured content
- Easy data management and archiving
- Generate .AVI video of selected image data for portability and sharing
- Replay all visual information obtained during flight, including moving map and telemetry data
- Frame by frame review of aerial intelligence providing complete analysis, reporting and documentation

\*Requires optional Advanced Imaging System.



SkyIMD, Inc.  
701 Skyway Road  
San Carlos, CA 94070 USA  
[www.SkyIMD.com](http://www.SkyIMD.com)  
(650) 610-1560  
(650) 610-1545 FAX